

InTouch.

Enham
releasing potential

The Newsletter for Enham's Supporters and Friends

2009-10

90th Anniversary Edition

Clive's skydive

Enham spreads its wings: New Direct Payments Service launched in Leicester

Café Enham number 2!

Turning business dreams into reality



Enham celebrates
90 Years

Enham is
Sainsbury's Local
Charity of the Year

Enham is a leading charity dedicated to giving disabled people the opportunities to make real choices for a fulfilling and successful life.

Introduction



Welcome to this year's edition of In Touch, Enham's newsletter designed specifically to keep you informed about our work on behalf of disabled people. There is lots of exciting news contained within,

which I am sure will interest you and give you confidence in Enham's progression on all fronts over the past year and the impact we are having in supporting disabled people.

Enham is a unique charity that balances its approach between undertaking its work in a business like manner and acting for the public benefit. The benefit is related to the Charity's aims and is concerned with the promotion of equal opportunities for an important and underprivileged sector of our society. The funds generated are invested in the charity to improve the quality of life and promote choice of lifestyle for disabled people. Some examples of charitable investment are as follows:

- the subsidies to Enham's supported businesses. These businesses employ disabled people who otherwise would not be able to work.
- the below market rates we apply to many of our housing rents so that disabled people can have better accommodation.
- the operation of our Café Enham community cafés that provide much needed support for disabled people in the community, producing healthy, low cost meals, and offering training and employment opportunities for disabled clients.

Our charity employs a carefully selected and well-trained workforce to achieve its aims and it is only limited in what it can do by its resources. We always need your help in this in terms of fundraising income. However, in making the best use of resources, our services are considerably increased by the support of many volunteers and we are always seeking more people to help us by bringing in new skills and experience.

Thank you for all that you do for Enham.

Mike Smith
Chief Executive

Contents

- | | | | |
|-----------|---|-------------------|--|
| 02 | Introduction
from Mike Smith, Enham's Chief Executive | 10 | New Services
Happy customers using Enham's Payroll Service |
| 03 | Cover Story
Clive's skydive of a lifetime | 11 | Direct to Leicester with no stops!
Enham goes lemon crazy at Café Enham opening |
| 04 | Enham is Sainsbury's Local Charity of the Year 2009 | 12 | Client Focus: Clive Henderson |
| 05 | A perfect blend as Costa Coffee and Enham join forces | 13 | Wedding Bells |
| 06 | Quality assured at Enham: Our care homes are awarded 3-star rating
Turning business dreams into reality | 14 | What your money has helped to purchase
Looking for a different approach to gaining work experience after redundancy? |
| 07 | Raising awareness: Enham's VIPs | 15 | Ever thought about leaving a legacy? |
| 08 | Up, up and away! Enham celebrates 90 years | Back Cover | Nova Appeal update
London Marathon |
| 09 | The EACH Project (Enham Alamein Heritage Community Heritage) | | |

Clive's skydive of a lifetime

“

I don't lead a 'disabled' life - my dad taught me to be like that and to be strong.

”

The 28th May 2009 was, for most people, an ordinary day. That morning in Netheravon, near Salisbury, Enham client Clive Henderson was getting ready to do something a little less ordinary – a skydive from 13,000ft with the world famous Red Devils. More extraordinary is the fact that Clive is a wheelchair user with cerebral palsy and talks through a 'Litewriter' – a talking keyboard.

Originally from London, Clive has been a resident at Enham for 10 years and is now aged 33. Clive is an independent person, who doesn't let his disability get in his way when it comes to getting the most out of life. He says: "I don't want being disabled to stop me doing the things I want to do. I don't lead a 'disabled' life - my dad taught me to be like that and to be strong."

Clive wanted to raise money for a special piece of walking equipment to enable him to get around his flat easier. If you were to ask him why he chose to do a skydive, he would reply "I love doing mad things - I can't see why not!"

Liz Cosgrove, Enham's Community Fundraiser, who made the arrangements for his jump said: "When Clive asked me how he could raise some money for his equipment, I jokingly said he could do a skydive. He thought it was a great idea and asked when he could do it!"

The only stipulation for Clive doing the jump was that he needed to wear a special harness and lift his legs on landing.

There were a few anxious faces during the training sessions that morning when one of the

Clive with his Tandem Instructor, Red Devil Corporal Billy Blanchard



Red Devils said: "You'll be jumping from 13,000 ft at a speed of 120 miles per hour. Any questions?" Everyone in the room was silent apart from Clive who replied "Can we go any faster?"

It was 2.30pm when Clive finally did his tandem jump, with his friends watching from below. Clive said he will never forget his experience: "I was falling through the clouds, the speed was exhilarating and the view underneath was spectacular."

Liz Cosgrove, who also watched her husband Dave jump that day, said: "The Red Devils Team at Netheravon could not have made us feel more welcome, were extremely professional and made the day perfect."

Clive's story about his jump had been closely followed over the preceding weeks to his big day, on local radio station Andover Sound and in the Andover Advertiser, the local paper, so when he was out and about in the town centre, people wanted to meet the man himself, wish him luck, and generously gave him money towards his appeal.

Clive has raised just over £1600, and he is now enjoying the task of buying his equipment. Without the support he received, whether in person, or through the Justgiving website (www.justgiving.com), he would not be doing this now, so both Enham and Clive would like to say a heartfelt thank you to all who have encouraged and supported him.

Read more about Clive on page 12.

Why not enjoy the experience of a lifetime! You too could be doing a tandem skydive with the Red Devils, diving with sharks, raising funds overseas by cycling from London to Paris, or even trekking in Peru! Would you like to do something extraordinary and raise money for Enham at the same time? If so, contact **Liz Cosgrove**, Community Fundraiser on **01264 345848** or by email liz.cosgrove@enham.org.uk

Welcome to Sainsbury's

Liz Cosgrove (fourth from left)
with the staff from Sainsbury's



Enham is Sainsbury's Local Charity of the Year 2009

Enham has been awarded 'Sainsbury's Local Charity of the Year', as part of the supermarket giant's 140th birthday celebrations in 2009, giving local stores the opportunity to choose a local charity to support.

Competing against 35 other entrants, Enham was invited, along with 2 other finalists, to give a 10 minute presentation about why we should be chosen. Events and Community Fundraiser, Liz Cosgrove and Enham client, Matthew Puffett, delivered their speech on how fundraising makes a difference to the lives of our disabled clients.

Winning this accolade will now give Enham the opportunity to work closely with Sainsbury's staff and customers in Andover for the next twelve months to raise our charity profile and awareness whilst building a lasting partnership.

Among other events and activities planned are an open day for Sainsbury Staff and Enham clients to get to know each other, plus an 'Enham

Awareness Week' which will take place in the store from 7-11 September 2009.

Jane Stephens, Store Manager at Sainsbury's, Shepherds Spring Lane, Andover, is looking forward to the partnership: "We really feel we can make a positive difference to the local community with our support of Enham. The whole team is buzzing with ideas."

Liz Cosgrove says: "Working together with other businesses and organisations can bring many rewards. It really helps to have the name of a national supermarket supporting us and we are delighted to be working with Sainsbury's."

Sainsbury's staff have now thrown themselves in at the deep end and produced a team to parachute with the famous Red Devil's in Netheravon, near Salisbury. The 'Andover Angels' will be following in client Clive Henderson's footsteps (read about Clive's skydive on page 3) raising funds for Enham.

A perfect blend as Costa Coffee and Enham join forces

Pictured: *Left to right:* Teresa Smith, Manager of Costa Coffee Southampton Marlands, Michael Steel, Enham's Partnership Liaison Manager, Cody Goodwin, e2e learner at Enham



NEW Partnership!



Enham e2e (Entry to Employment) learner Cody Goodwin was gaining work experience in the Costa Coffee store in The Mall Marlands Shopping Centre, Southampton, when after 6 weeks, she was offered a job. Based on her success, both Costa Coffee and Enham agreed to form a formal partnership, whereby Enham will provide clients with work placements in 12 Costa Coffee stores across the South East. (From as far as Bognor Regis to Southampton).

Michael Steel, Enham's Partnership Liaison Manager commented: "I'm thrilled to say that Costa Coffee is another high profile chain organisation to sign up with us as a key account in providing work experience placements. This partnership will provide the

opportunity for Enham clients to experience a realistic work environment and develop work based skills, enhancing their chances of moving towards paid employment."

Paul Downey, General Manager, Costa Coffee, added: "We're delighted to be working with Enham in this way. Costa Coffee prides itself on providing first class customer service and we're pleased to enhance our recruitment policy by giving opportunities to people with disabilities via this exciting partnership with Enham."

Enham's e2e programme is based in 3 Hampshire locations: Southampton, Farnborough and Alton and is funded by the Learning and Skills Council. It is designed to help and support young people aged 16-18 who may have challenges, disabilities

or learning needs, to gain the skills to enter employment, apprenticeships or full time education.



We're delighted to be working with Enham in this way. We're pleased to enhance our recruitment policy by giving opportunities to people with disabilities.



Quality assured at Enham as our care homes are awarded 3-star rating

Each of Enham's 3 care homes – Elizabeth House, Michael House and William House – were awarded the maximum possible rating of 3 stars following inspection visits by The Care Quality Commission (CQC) earlier this year.

Louise Gordon, Operations Director at Enham, said: "We are delighted with these results. They reflect the superb 'around the clock' work and commitment that our care home staff provide to ensure that clients are valued as individuals, enabling them

to live in a dignified and comfortable environment. Nationally, only approximately 20% of UK care homes achieve the 3-star rating – which demonstrates the high standard of our service here in Hampshire."

Enham's 3 modern care homes here in the village of Enham Alamein provide residential care and support for people with physical disabilities and associated learning difficulties. Each home contains a mix of 18 one-bed flats and bedsits, with en suite facilities and



kitchen/dining areas. Support and care is available 24 hours a day, 365 days a year.

The Care Quality Commission (formerly CSCI) is the independent regulator of all health and adult social care in England. Their aim is to ensure best care is provided in locations such as hospitals, care homes and people's own homes.



Enham Self-Employment Team, Disability Employment Advisors and clients celebrate the 1000 client landmark. Andy West is holding the number 1

In November 2008, Enham's Self-Employment Division celebrated a landmark, having helped 1000 disabled or disadvantaged clients to set up their own business since the launch of the service in 2001.

"Many disabled people face barriers in finding employment" said Gordon Rhodes, Self-Employment Manager. "Enham is an organisation that is aiming to change this. Our

Turning business dreams into reality

Self-Employment Division has enabled our clients to become economically independent, creating their own businesses and providing the opportunity to gain independence and turn business dreams into reality."

Not only have many clients become successful, but a few have been nominated for, or won, various business awards. You may remember Andy West and his company 'Westie Bears' (specialising in hand-made miniature collector's bears). Andy was a nominee for the Barclays Trading Places Awards last year and he went on to be a Bronze Award Winner.

Enham is delighted this year that several more of our talented clients have been nominated for the competition,

and one of them has now reached the semi-finals: Paul McDonald is a band agent and event arranger with his company Cravin Tunez Entertainment.

Paul lost an arm in a train accident while inadvertently playing on train tracks with his friends at the age of 12. Paul became depressed as a result but has overcome this. Spurred on by his passion for music, he set up his own events company with Enham's help.

The final ten entrants in The Barclays Trading Places Awards will be announced in the early Autumn and the Awards Ceremony will be taking place in October. Good luck Paul!



Raising awareness: Enham's VIPs

Pictured: Enham client Jo Hibberd with Jonathan Shaw, Minister for Disability



I thought there was a splendid 'can do' feel about all the training and work places.

The High Sheriff of Hampshire, Mr Michael Campbell M.B.E. D.L.



Each year Enham has many interesting and distinguished visitors, not only to our site here in Enham Alamein, but to our other divisions in the UK. They are able to see our range of services first hand, so that in turn they can spread the word about the work we do here.

The High Sheriff of Hampshire, Mr Michael Campbell M.B.E. D.L. paid us a visit in January (at our Enham Alamein Headquarters), having been Chairman at the Lord Mayor Treloar's College (Alton) for some years. He has a keen interest in disability and said: "I thought there was a splendid 'can do' feel about all the training and work places, and Enham's plans for the future will bring all its well established ethos and good staff together, into an altogether much improved environment, to enable the work to advance even further."

In May this year Enham was delighted to receive a visit

from Jonathan Shaw, Minister for Disability, who reassured us about the Government's commitment to improving the lives of disabled people, and access to jobs for those who can work, in order to get them off benefits, and give the right support to those who can't work.

More recently, the New Mayor of Test Valley and Lady Mayoress, Councillor Ian Hibberd and Teresa Hibberd, made their first official visit to us in August, enhancing our good relationship with Test Valley Borough Council and enabling us to continue to raise awareness of our organisation on a local level.



1944 - Enham was involved in the production of Training Gliders to be used in the Second World War

Up, up and away! Enham celebrates 90 years



On 28th January 2009 Enham launched 90 balloons into the air in the grounds of Winchester Cathedral, to commemorate our important 90 year anniversary since the first disabled servicemen arrived here in 1919, having returned from the First World War.

Over the years Enham has transformed itself from a village rehabilitation centre to a disability organisation offering a diverse range of services covering 10 counties across the UK. We have thrived by constantly adapting to the changing needs of disabled people, not forgetting the tireless support of our friends, donors and partners, including you! So a huge thank you goes to all of you.



Balloon Launch at Winchester Cathedral

90th Anniversary Appeal

Enham would like to raise £90,000 so that we can develop new leading-edge services to help disabled and disadvantaged people.

Our current appeal total stands at £36,043*

Ways you can get involved...



DENIM FOR ENHAM

This year we launched a brand new fundraising campaign to support our 90th Appeal. Would you like to raise funds for Enham in a more fun way by involving your school, workplace or organisation? Why not hold a Denim for Enham Day (on a date of your choice) where everyone dresses down in anything denim and makes a donation to Enham. We will help you make your day a true blue success!

Even your **small** change can bring about **big** change.

Sign-up today:

To register that you are taking part in Denim for Enham, please visit www.enham.org.uk/denimforenham or call the Fundraising Team on **01264 345848**.

Enham 90th Anniversary Gala Dinner

How would you like a night out at a stunning venue?

Enham 90th Anniversary Gala Dinner and Auction – **5th November 2009**

To celebrate in style and help reach our £90,000 target, we are holding a special Gala Dinner and Auction at the Imperial War Museum in London, a fitting and evocative venue given Enham's historical background.

For further information and to buy tickets online, visit our website www.enham.org.uk/galadinner. Alternatively, please contact: **Kate MacDougall**, Major Events Project Manager, Enham. Tel: **01264 345854** or email: events@enham.org.uk

*Appeal total at time of going to press

Fancy a walk?

Why not join Team Enham and Walk the Test Way – 11th October 2009

Join our team of 90 walkers and choose your walk from 2.5 miles through to a challenging 26 miles. Further information can be found on our website www.enham.org.uk/walkthetestway. To register visit www.walkthetestway.co.uk
Event organised by the Rotary Club of Romsey Test

If you wish to support Enham and the 90th Anniversary Appeal in any other way, or would like further information, please contact our Fundraising Department on **01264 345848**.

You can also donate online via www.enham.org.uk

From the Archives

Early industries at Enham



Upholstery 1933



Basketmaking in the Village 1938

Field Marshall Montgomery of Alamein visits Enham in 1947



The **EACH project** is a community partnership organised by Enham, Enham Alamein Parish Council and Smannell & Enham Church of England Primary School, to explore the local heritage and raise awareness of the fascinating history of the Enham charity and Enham Alamein village, near Andover.

Thanks to a grant from the Heritage Lottery Fund, the project began recently to start the enormous task of cataloguing, digitising, and conserving the wealth of historical artefacts, documents and photographs that have been collected over the last 90 years. Artefacts include the bell from El Alamein Station and two sets of wrought iron gates from the old Alamein Club in Cairo where the British Armed Forces were based during the Second World War.

Leading the EACH project is experienced historian Kelly Mitchell, who says: "The history of Enham and Enham Alamein village is so unique. Enham was founded back in 1919 as a rehabilitation centre for injured servicemen returning from the First World War and has remained the only centre of its kind in the UK. The importance of such a centre is so pertinent today."

The EACH project is due to be completed in autumn 2010, with an exhibition at Andover

EACH – The Enham Alamein Community Heritage Project (2009-2010)

Museum and a documentary which will be created by Enham clients and the pupils from Smannell and Enham School.

Appeal for Volunteers

Kelly is appealing for help from anyone who has enthusiasm for exploring and interpreting the past who has some time to spare or who is looking for work experience. Those willing to talk about their experiences past and present of Enham Alamein are particularly encouraged to get in



touch, especially those who recall the early days of the village, to help us create an oral history archive.

If you would like to get involved in this exciting and rewarding project, contact **Kelly Mitchell** on **01264 345800 x4209** or by email kelly.mitchell@enham.org.uk

Photo: EACH Project Manager Kelly Mitchell

Enham has been expanding its reach! We've introduced new services which operate across ten counties (Hampshire, Somerset, Surrey, Oxford, Berkshire, Kent, Dorset, Buckinghamshire, Sussex and Leicester).

Here's a fast track guide to what's new, and being managed by our Learning and Employment Division:



Pathways to Work and Pathways to Work Self-Employment. Pathways to Work helps people who get an ill-health related benefit find employment. Delivered in partnership with RBLI (Royal British Legion Industries), this programme is designed to equip clients with the skills and tools needed to secure employment or self-employment.

e2e Southampton. Autumn 2008 saw the opening of our new internet café and Entry 2 Employment (e2e) centre in The Mall Marlands Shopping Centre in Southampton. Entry 2 Employment is a programme to help and support young people aged 16-18 who may have challenges, disabilities or learning needs, to gain the skills to enter employment, apprenticeships or full time education. This is Enham's third e2e centre.



Reach Out. Reach Out gives access to an Employment Adviser who provides clients with support and help to improve their future. The Reach Out service is provided in Hampshire, Isle of Wight, Portsmouth and Southampton.

ACE. The ACE programme is activity based and aims to help 14-16 year olds improve some of the practical skills required to move on to work, college or training after leaving school. Courses are offered in areas such as construction, gardening and horticulture, art and design. Students create a portfolio of their work whilst on the ACE programme, this evidence is then used to gain a range of awards. Courses are held on a weekly basis, outside of school hours, and with a mixture of students from different schools.

The SEED Project (South Eastern Enterprise Development). This project is run by both Enham and Chichester College. It provides free coaching and mentoring to people over 19 years of age, who are either economically inactive (looking after a home for example), have a disability, or who are disadvantaged. This service is available in Hampshire, Berkshire, East and West Sussex, and Kent.

Photo – e2e Southampton Opening Day Celebrations: *Far left:* Mike Smith Enham's Chief Executive, *far right:* Rod Chamberlain Enham's Chairman, *centre:* the e2e Team and e2e Learners

Happy customers using the Enham Payroll Service

Since its launch in January of this year, Enham's Payroll Service has seen a steady growth in clients and according to a recent telephone survey, many have been pleased with the service so far. "Very happy with the service, everything is running smoothly, staff are always helpful and the service is very professional. Any enquiry is dealt with quickly and efficiently," was reported by one happy client.

The service is designed specifically for people using Direct Payments* and those who employ a personal assistant or staff to look after their care

needs, or the care needs of a member of their family. Available for practical help and advice, our Payroll Service will ensure that care staff are paid correctly and things like tax and national insurance contributions are calculated on behalf of clients. Our Direct Payments and Payroll Teams work closely together to provide our clients with a reliable high-standard of service.

**Direct Payments are cash payments received from the Council to enable clients to choose and buy their own care and support, instead of receiving care from Social Services.*



Direct to Leicester with no stops!



The Leicester Direct Payments Team with Rod Chamberlain (3rd from right), Mike Smith (far left), and the Lord Mayor and Lady Mayoress of Leicester.

Enham has extended its services beyond the South of England, after successfully winning the Direct Payments contract in Leicester, awarded by Leicester City Council. To officially launch the service, a VIP event was held at the Direct Payments offices in Leicester in August attended by the Lord Mayor and Lady Mayoress of Leicester.

Guests from across Leicester, including representatives from Leicester City Council, met with Rod Chamberlain the Chairman of Enham's Board of Trustees, and the team

from Enham. A cake, made by Enham's clients in Andover to celebrate the opening of the service, was cut by the Mayor.

"Direct Payments puts disabled people in charge of their own finances so that they can choose where and when to spend their benefits depending on their needs," said Mike Smith, Enham's Chief Executive. "The new contract in Leicester is based on Enham's successful operation of the Direct Payments service in Hampshire, which currently assists over 500 clients in the

County to manage their own lives. We are delighted to extend our work to Leicester and we intend to make a great success of these services on behalf of disabled people in the City. Over the coming year we intend to widen our influence further and assist disabled people wherever we identify the need. We are especially pleased with the Direct Payments programme as it gives clients choice and control of their own lifestyle, which is entirely in keeping with Enham's ethos and values."

Enham goes lemon crazy at Café Enham opening!

We officially opened a brand new café at the Landport Community Centre in Portsmouth in Spring 2009 with a lunchtime event with a citrus twist!

The café was officially opened with a lemon tree planting ceremony by Councillor Steven Wylie of Portsmouth City Council, in the open courtyard of the community centre. Guests were given the opportunity to taste some of Café Enham's healthy food options and a refreshing lemon cocktail especially created for the event, whilst our chef, Mark DeReding, cooked up a storm with a recipe demonstration of lemon cupcakes.

The first Café Enham opened in Omega Street, Portsmouth and has been successful since 2007. Both cafés are operated as Social Enterprises by Enham, offering direct employment opportunities and employment training for local people on Enham's Workstep Programme, while also creating revenue to fund the development of our services.



From left: Rod Chamberlain – Enham Chairman, Councillor Steven Wylie and Mark Maclay DL – Deputy Lieutenant for Hampshire

Photography by Marty Forrest

Clive Henderson

CLIENT
FOCUS



Photo of Clive courtesy of *The Andover Advertiser*

You have read about Clive Henderson earlier on page 3 and his amazing skydive with the Red Devils. Here you find out a little more about him.

Despite having cerebral palsy, Clive very much likes to stand out in the crowd and has an amazing sense of humour: “Other people go to bed early – I like to party!” he says. More importantly he doesn’t let anything get in his way when it comes to enjoying life. In fact, it’s often other people who may inadvertently get in his way! He admits “I don’t let disability stand in my way.”

His determined attitude is also reflected in his academic and vocational achievements. He has studied IT, numeracy, metalwork and horticulture and has passed City and Guilds courses, including English and Maths. His ambition is to become a car mechanic or a DJ as he says “being a Londoner, I have the gift of the gab!”

Life at Enham

Since coming to Enham 11 years ago, Clive has been involved in a wide range of activities and projects, his favourite being ‘Enhambay’ an online shop similar to eBay. The team sell

items on eBay on behalf of local residents and staff, and take a commission of the final bid price. A team of clients, including Clive, have managed and developed the project themselves and if they encounter a problem, they sort it out themselves.

Of his personal support at Enham, Clive comments: “My carer, Roger, has a similar personality to my dad and I, and we get on really well. He leaves me to get on with things. If I make a mistake it’s my look out.”

At Enham we have a real ‘can-do attitude’, focusing on what people want to achieve and the steps needed to achieve their aims. We provide a structured and personally tailored development plan to all of our clients to provide progression in personal, life and work skills. These skills are delivered by our team of skills tutors and support staff with personal goals reviewed on a regular basis. There is a wide range of activities within the centre as well as those accessed within the local community. Much is provided through business enterprise project groups which in some cases are rolled out to provide a service for local people.

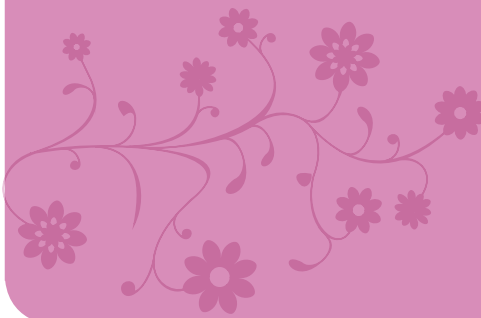
“In getting clients involved in how the Development Programme is run we have seen real change and growth in people’s lives and have achieved a more inclusive service which has provided a greater value to both our clients and staff,” says David Fullerton, Development Programme Manager.

The support and funds we receive from our donors and friends, means that we can continue to help change thousands of disabled people’s lives each year, not only making a difference to our residents here at Enham, but also to the clients in the ten counties we operate in. For more information visit www.enham.org.uk

More Facts about Clive:

- supports Chelsea football club “because they are from London!”
- is a keen traveller (including visits in Europe and Tunisia)
- is a great fan of motor racing (having lived near the Santa Pod Drag Racing Track in Northamptonshire)

Wedding Bells



Mike Smith with Ruth

**CLIENT
FOCUS**



The happy couple –
Richard and Ruth

On a sunny Saturday in June, clients Richard Turner and Ruth Freeth, who originally met at Enham, were married at the Andover Registry Office, followed by a blessing at St George's, the Alamein Church in Enham Alamein.

Ruth was attended by her two close friends and Mike Smith, Enham's Chief Executive and friend, was Richard's best man.

To celebrate, a reception was held in the Shoosmith Centre at Enham for their guests, some of whom were friends and staff from Enham. Liz Cosgrove, Community Fundraiser, commented "It was a beautiful and happy day and Ruth looked stunning in her wedding dress. We all wish Ruth and Richard the happiest of futures together."



1945 - The Egyptian Alamein Committee approved the gift of £225,000 (current equivalent of £6.3 million) to Enham Village Centre and in appreciation of this gift from Egypt - Enham village was renamed Enham Alamein.

What your money has helped to purchase

Our continued thanks go to all of you who help to support Enham's work. We use the money received from donations to buy vital equipment and enhance our services for all our clients. Here are some of the items that your money has helped to purchase this year:

- £500k towards our Nova Appeal to build specially designed modern accommodation and a Communal Learning Suite for our clients on our STEP2Employment – which helps disabled people into work.
- New furniture and refurbishment of Alexandra House, one of our residential care homes
- Vital photographic equipment for the Karten Centre, where clients are able to learn to use computers
- Setting up of a client Sports Club and purchase of sports equipment

Looking for a different approach to gaining work experience after redundancy?



Picture courtesy of Marty Forrest of Aspire Photographic

Tim Cowles and client Tim Holliday

Why not try Volunteering?

This is exactly what Tim Cowles has been doing for Enham this Summer. Originally a commercial vehicle paint sprayer, and a tattoo flash designer in his spare time, Tim was working for a local vehicle body building company when he was made redundant at the beginning of 2009. "I was looking at options for getting back to work and building up my C.V. Having approached Enham regarding employment opportunities, I was offered a volunteer post to run the art class on a Friday afternoon." Tim had never done volunteering before, but says that he is enjoying his time at Enham and would definitely consider volunteering in the future.

"I like it so much because the clients clearly enjoy the classes and they keep coming back!" said Tim. "Each week I see more new faces. Some want to come along to have fun painting and drawing and others just want to come along for a chat. I try to keep a really relaxed atmosphere."

He's pictured here with client Tim Holliday during an art class. This photograph was submitted to the Hampshire and Isle of Wight 25th Anniversary of Volunteer's Week Photo Competition with the caption "Drawing out the best in us all."

If you are interested in volunteering for Enham, please contact **Tessa Makepeace**, Volunteer Co-ordinator, for an informal chat about vacancies. Roles can range from minibus driving or running sports activities, to being an enabler/befriender or helping with IT training (depending on availability). Telephone her on **01264 345836** or email her tessa.makepeace@enham.org.uk

Ever thought about leaving a legacy?



There are many reasons why people leave money to charities and organisations but the most compelling of those is to make a difference to people's lives. In this way people can leave an enduring impression on the world and their money keeps on working when they're gone.

At Enham we help around 3,000 disabled people each year, people whose opportunities would otherwise have been limited. Your lasting legacy can help provide those opportunities.

Many people think that leaving a legacy is only for the wealthy. However even leaving a small amount can make a real difference. For instance, just £200 could fund a range opportunities for our clients, such as:

- *A term of training for a STEP2employment client – a programme which is designed to help disabled people with vocational skills in order to secure work*
- *Vital transport for a series of work placement sessions for clients at a local garden centre*
- *Four x 3 hour sessions for one to one support for with a Peripatetic Life skills Tutor*
- *Funding important client assessment time during our 3 week assessment programme, for those clients wishing to secure a placement on Enham's Development Programme.*

How? It's as simple as either leaving a letter of wish/intent or making or changing your will. We will help you with every step you need to take.

Further Information: If you are considering leaving money to Enham in your will, please contact our **Fundraising Department** on **01264 345848**. Any conversations will be treated as private and confidential and we can arrange to visit you if you wish.

Postal address: Fundraising Department, Enham, Enham Place, Enham Alamein, Andover, Hampshire SP11 6JS



Over the 90 years, visitors to Enham have included King George V, Queen Mary, Field Marshall Montgomery of Alamein, Queen Elizabeth The Queen Mother and our Patron HRH The Duchess of Gloucester.



Queen Elizabeth The Queen Mother



Since Enham was founded we have helped over 250,000 people gain independence and lead more fulfilling lives.

▼ Nova Appeal update

The Nova Appeal launched in 2006 has now reached its original target of **£1.2 million**, thanks to income from trusts, foundations, charitable events and individual donations.

Enham plans to build 10 specially designed studio flats and a Communal Learning Suite for our STEP2Employment clients, here in Enham Alamein village.

This new development will give our clients the freedom to live more independently whilst they study for nationally recognised qualifications. The learning centre will give them the resources they need to study and to develop the confidence to move into employment.



Senior Trust Fundraiser, Rachael Prest commented "I am so delighted at the level of support we have received from all the donors to this much needed project, and in particular from Coopers Livery for their tremendous £500,000 loan. We aim to begin building by the end of this year. Thank you to all of our supporting bodies and donors."



▼ London Marathon

It was another successful year for Enham's London Marathon runners. Amid the soaring temperatures, eight brave competitors took to the streets of London on Sunday 26th April, spurred on by steel bands, celebrity runners and roaring crowds. All reached the finishing line, so congratulations and our thanks to all the team.

Congratulations and our thanks to all of the team: Ben Sharman (his fourth marathon for Enham), Tina Spence, John Staunton (another regular), Natalie Chapman, Kevin Williams, Sarah Hutchins, Del Humphries and Evelyn Barr, who raised a staggering £12,000 for Enham.

Will you be ready for the 26.2 mile challenge in 2010?

Phone early for a chance to run for Enham in the 2010 Marathon and we'll support you every step of the way!

Join our Marathon Team and you will receive ongoing support with both your training and how you can raise your sponsorship money. For further information, please contact **Liz Cosgrove**, Community Fundraiser: email liz.cosgrove@enham.org.uk or phone **01264 345848**



2005 - Enham took on its youngest clients: e2e Entry to Employment in Farnborough, Hampshire, was the first of currently three Enham e2e Centres, helping teenagers and young adults with learning disabilities or who are disadvantaged, find work or enter into their next stage of education.