

# ROUTE TO » INDEPENDENCE



Be who  
you  
WANT  
to be



# What does independence mean to you?



*All about me*

Route to Independence (R2I) is a dynamic and forward looking programme where you will be supported to fulfil your potential. R2I will enable you to overcome barriers and ensure that you are confident to make life-changing decisions.

R2I has over 20 learning units designed jointly with young people, to meet their needs to enable them to live their lives fully in the way they want to. Route to Independence can provide the skills to move towards paid employment and independent living.



**do you want more  
choice and control over**

Independent Living  
Mixing with People  
Rights and Responsibilities  
Relationships  
Moving onto Continuing  
Education  
Supervising People

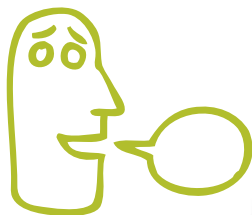
Recruiting and Training  
Personal Assistants  
Decision Making  
Communication  
Travel  
Work  
Seeking Help and Support

## MELODY MEW



“Route to Independence is all about choice! You can take a ‘pick and mix’ approach – choosing a personal selection of courses from our programme of varied, innovative and exciting projects and courses. I find Enham an awe-inspiring place to work and am continually amazed by the progress and achievements of our students. R2I is written around individual needs and successes are individual to each student”.

Melody Mew, Route to Independence Manager



choice

“This programme is just what I’m seeking for my eighteen year old son. Although he has communication difficulties, he is so keen to develop skills to be more involved with the local community.” Sharon, parent, Hampshire.

“I have six or seven clients who would jump at the opportunity to come on this Route to Independence programme.” Tim, independent carer, Winchester.



# Independent living



We will help you to find your way, by enabling you to experience different options for you to decide the way you want to live your life.



flexibility



**exciting and interactive ways to learn**

*Fits in with your LIFE*

Each unit on the Route to Independence programme is delivered by fully trained staff, skilled in supporting students with a wide variety of physical and learning disabilities. Our approach is to deliver integrated, holistic and modern projects and courses, which relate to what's going on around you now. The programme is continually evolving to meet individual changing needs.

# Pace and Progress



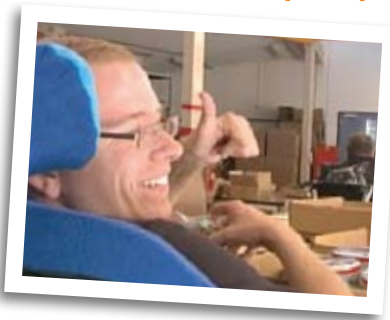
## HOW TO GET STARTED ON R21

How?????!

You can be referred by professionals such as GPs or Adult Services – or you can self refer. For a taster session just come to one of our regular Open Days. Or we can send you an information pack which will give you details of our assessment of individual needs.

FUN! 😄

## Where is it happening?



R21 takes place at Enham's main centre in the village of Enham Alamein, just outside Andover, or at one of our sites around Hampshire. The programme is designed to fit in with your life and any existing commitments you may have, whether they be sport, music, art or social! Transport is available from Andover train and bus stations if needed.

# ASSESSMENTS

Assessments provide the opportunity for you to tell us what you want from your programme, for us to assess support needs and for everyone to agree an action plan which will be regularly reviewed. These generally last for three sessions over an agreed period of time, according to individual need.

## Who are we? ←

Enham is a registered charity with over 90 years' experience of working with people with a wide range of disabilities and long term health problems.

We develop innovative and relevant programmes that open up opportunities for worthwhile employment, to enable disabled people to make real choices in life.



## Contact Enham

To learn more about the Route to Independence programme, please telephone Enham or visit our website [www.enham.org.uk](http://www.enham.org.uk)

Telephone **01264 345800** extension **2021**

Email [r2i@enham.org.uk](mailto:r2i@enham.org.uk)

Enham, Enham Place, Enham Alamein,  
Andover, Hampshire SP11 6JS



If you need this leaflet in large text, or other formats or languages, please contact us.